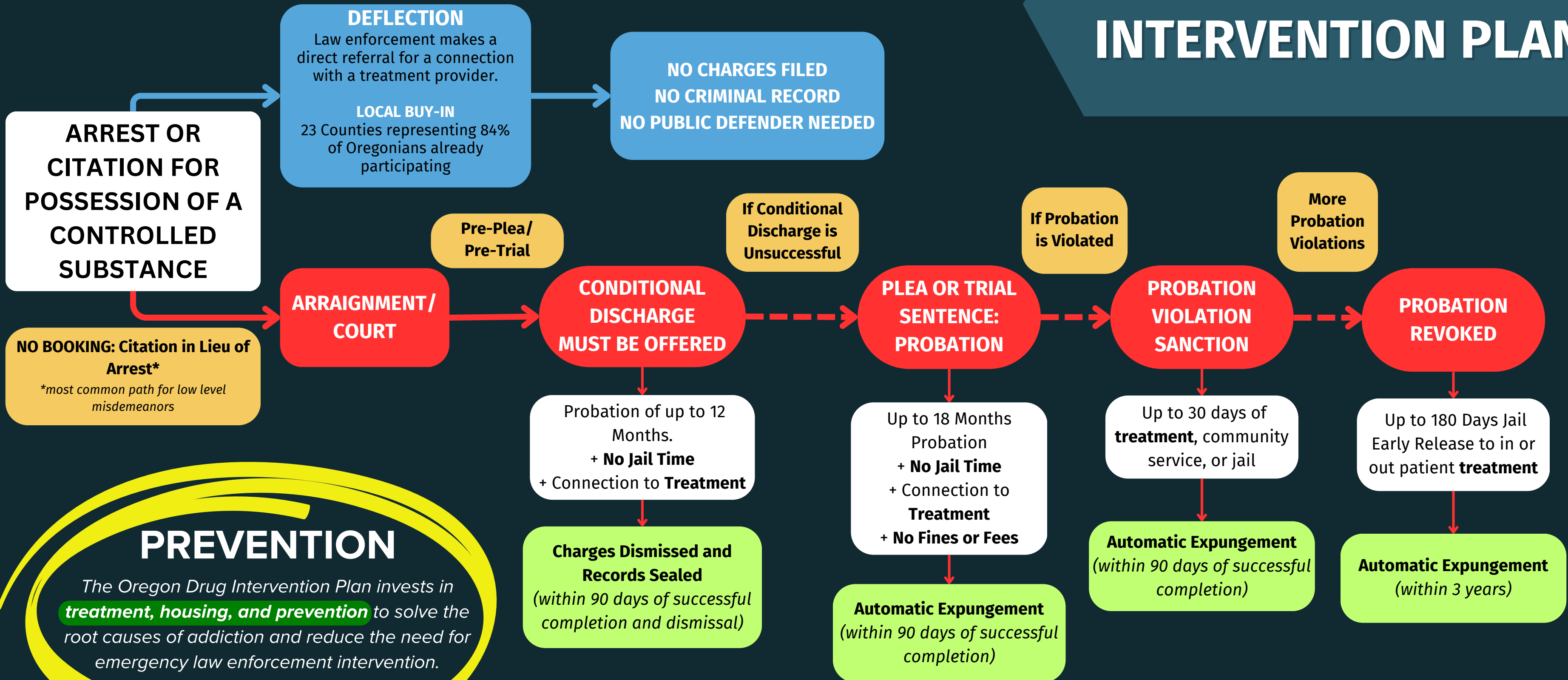


OREGON DRUG INTERVENTION PLAN



ARREST OR CITATION FOR POSSESSION OF A CONTROLLED SUBSTANCE

DEFLECTION
Law enforcement makes a direct referral for a connection with a treatment provider.
LOCAL BUY-IN
23 Counties representing 84% of Oregonians already participating

**NO CHARGES FILED
NO CRIMINAL RECORD
NO PUBLIC DEFENDER NEEDED**

NO BOOKING: Citation in Lieu of Arrest*
**most common path for low level misdemeanors*

ARRAIGNMENT / COURT

Pre-Plea/
Pre-Trial

CONDITIONAL DISCHARGE MUST BE OFFERED

If Conditional Discharge is Unsuccessful

PLEA OR TRIAL SENTENCE: PROBATION

If Probation is Violated

PROBATION VIOLATION SANCTION

More Probation Violations

PROBATION REVOKED

Probation of up to 12 Months.
+ No Jail Time
+ Connection to Treatment

Charges Dismissed and Records Sealed
(within 90 days of successful completion and dismissal)

Up to 18 Months Probation
+ No Jail Time
+ Connection to Treatment
+ No Fines or Fees

Automatic Expungement
(within 90 days of successful completion)

Up to 30 days of **treatment**, community service, or jail

Automatic Expungement
(within 90 days of successful completion)

Up to 180 Days Jail
Early Release to in or out patient **treatment**

Automatic Expungement
(within 3 years)

PREVENTION
*The Oregon Drug Intervention Plan invests in **treatment, housing, and prevention** to solve the root causes of addiction and reduce the need for emergency law enforcement intervention.*